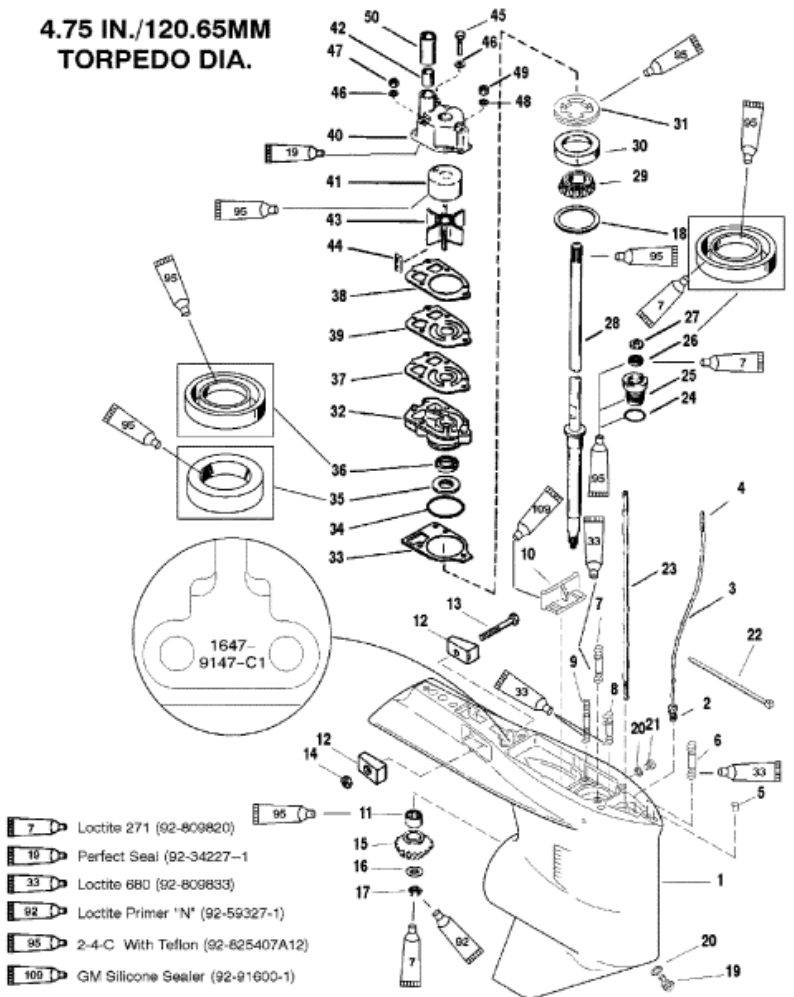


**4.75 IN./120.65MM
 TORPEDO DIA.**



11976

Parts List

| Ref | Class | Part | Description | Qty | Comment | Footnote |
|-----|-------|----------|---------------------------------|-----|------------------------------|----------|
| 1 | 1647 | 9148A47 | GEAR HOUSING | 1 | (Black) (Basic) | |
| 1 | 1647 | 9148A48 | GEAR HOUSING | 1 | (Black) (Basic) | |
| 2 | 22 | 85822A10 | CONNECTOR ASSEMBLY | 1 | | |
| 3 | | NSS | NOT SOLD SEPARATE, Tubin | 1 | | 7 |
| 4 | | NSS | NOT SOLD SEPARATE, Conn | 1 | | 7 |
| 5 | 17 | 43044 | PIN, Dowel (.375 x .625) (Witho | 2 | | |
| 6 | 16 | 18978 3 | STUD, (.438 x 3.82 Inches) | 1 | | 5 |
| 7 | 16 | 57920 3 | STUD, (.437-14/.437-20 x 2.060) | 2 | | 5 |
| 8 | 16 | 56297 | STUD, (.312 x 3.38) | 1 | | |
| 9 | 16 | 30667 | STUD, (.250-20/.250-28 x 3.125) | 2 | | |
| 10 | | 67891 | FILLER BLOCK | 1 | | |
| 11 | 31 | 42647A 1 | BEARING ASSEMBLY, Roller | 1 | | |
| 12 | | 826134 | ANODE | 2 | | |
| 13 | 10 | 40003 33 | SCREW, (M6 x 40) | 1 | | |
| 14 | 11 | 826833 6 | NUT, (M6) | 1 | | |
| 15 | | NSS | NOT SOLD SEPARATE, Pinion Ge | 1 | (2.0:1 Gear Ratio-14 Teeth) | 7 |
| 15 | | NSS | NOT SOLD SEPARATE, Pinion Ge | 1 | (1.87:1 Gear Ratio-15 Teeth) | 7 |
| 16 | 12 | 92721 | WASHER | 1 | | |
| 17 | 11 | 35921 | NUT, (.625-18) | 1 | | |
| 18 | 15 | 42637A 1 | SHIM SET | AR | | 9 |
| 19 | 22 | 67892A 1 | FITTING KIT, Plug Fill/Drain | 1 | | |
| 20 | 12 | 19183 | WASHER, Fiber | 2 | | 10,8 |
| 21 | 10 | 79953A 2 | SCREW KIT, (.375-16 x .250) | 1 | | |
| 22 | | 56762 | CABLE TIE, (4.00 Inches) | 1 | | |
| 23 | | 78902 2 | SHIFT SHAFT | 1 | | |
| 24 | 25 | 25439 | O-RING, (.862 x .103) | 1 | | 4,8 |
| 25 | 23 | 77631A 2 | BUSHING ASSEMBLY | 1 | | 8 |
| 26 | 26 | 816464 1 | SEAL, Oil | 1 | | 8 |
| 27 | 12 | 77674 | WASHER | 1 | | |
| 28 | 45 | 44209 1 | DRIVESHAFT | 1 | | |
| 29 | 31 | 36387A 1 | BEARING, Roller | 1 | | |
| 30 | | NSS | NOT SOLD SEPARATE, Cup | 1 | | 7 |
| 31 | | 824519 | RETAINER | 1 | | |
| 32 | 46 | 42579A 3 | WATER PUMP BASE ASSEMBLY | 1 | | |
| 33 | 27 | 42631 1 | GASKET | 1 | | 4,10,8 |
| 34 | 25 | 90011 | O-RING, (2.175 x .175) | 1 | | |
| 35 | 26 | 89238 | OIL SEAL | 1 | | 8 |
| 36 | 26 | 16977 | OIL SEAL | 1 | | 8 |
| 37 | 27 | 85608 1 | GASKET | 1 | | 4,10,8 |
| 38 | 27 | 85609 1 | GASKET | 1 | | 4,10,8 |
| 39 | | 2242E | FACE PLATE | 1 | | 10 |